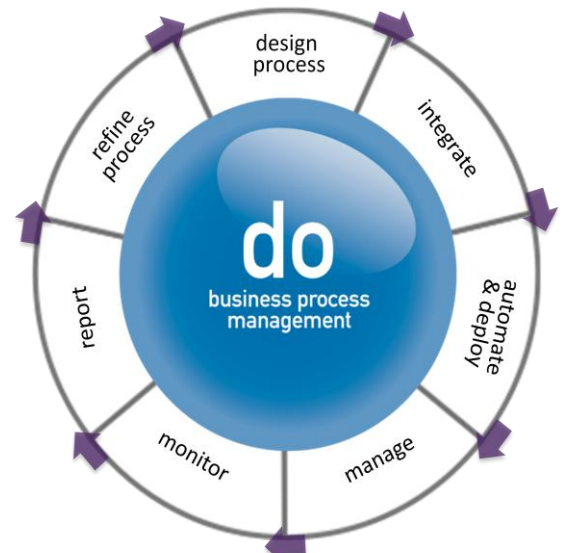


Master the Enterprise Process Life-cycle with Ease and Speed

In recent years Business Process Management (BPM) has garnered tremendous interest from organizations, largely because business processes are the organizational “drive train” for how things get done (or not). Today more than ever organizations are looking for ways to streamline and improve how they do business while effectively addressing competitive pressures, regulatory changes, market conditions, and customer demands. Metastorm BPM® provides a comprehensive foundation for enterprise-wide Business Process Management, uniting workers, systems, and information to improve business innovation, agility, and performance.

Every business process has a life-cycle, from discovery of the need to create or change a process through deploying, managing, and optimizing the process as requirements evolve. Metastorm BPM provides everything the enterprise needs to manage the complete process life-cycle and achieve unique levels of business process improvement. Moreover, the comprehensive, mature and highly unified nature of the Metastorm BPM suite allows organizations to do all of this faster, with greater ease and at lower costs than other alternatives.



Key Features

▪ Advanced Design Environment

- Collaborative Integrated Design: Use a single environment to design all aspects of your business process. Business Analysts can design a process, build UIs, implement rules and create process integration. While developers can work on and easily hand off more complex data access and integration tasks.
- Integrated Business Process Analysis: Integrated, advanced business process analysis and simulation provides insight into most valuable areas of improvement.
- Comprehensive Metamodel: Robust, comprehensive metamodel allows you to model all aspects of your process: Organizations, Goals, KPIs, Rules, Processes, UI Forms, etc.
- Highly Extensible: Add-in based infrastructure means that you can extend both the metamodel and corresponding design environment or use 3rd party frameworks that add additional functionality.

▪ Leading BPM Platform

- Stateless Design: Process Engine is based on proven technology and is capable of scaling up and out with our stateless design.
- Open Framework: SOA based design will allow you to utilize your existing infrastructure. For example, you can quickly enable your processes to be document centric by incorporating your existing DMS with our Open DMS Framework. Or you can maintain users, roles, and groups natively within your existing directories or systems with our Open Authentication infrastructure.
- Open Repository: Access to process metadata, runtime work items, and historical data is simple with our open and documented repository.
- Process Intelligence: Tightly integrated process intelligence capability provides fast and rich understanding of your processes

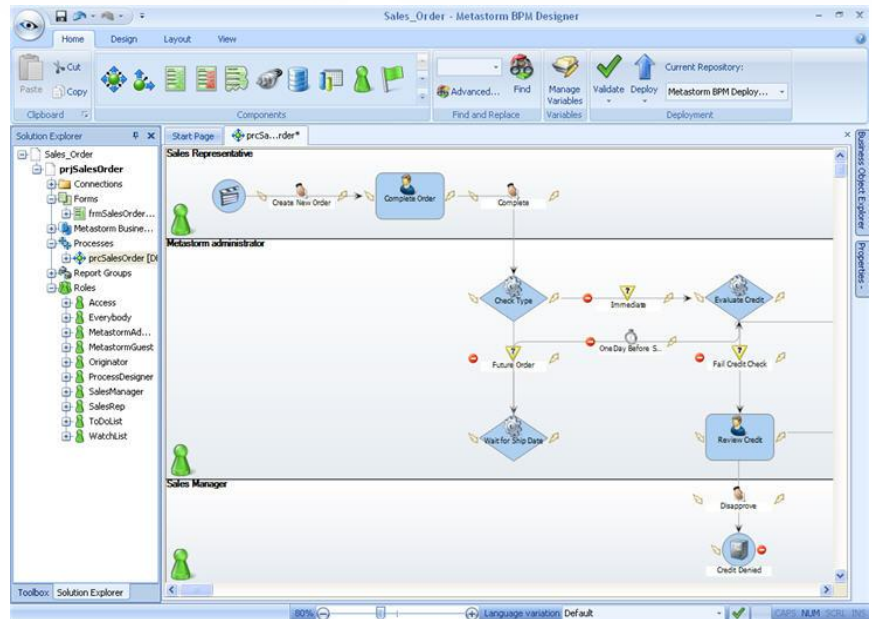
▪ Support for Diverse Client Perspectives

- ASP .Net: Highly customizable ASP.Net client is a fully feature web based interface allowing users access to their Metastorm To Do, Watch, Blank Forms, and Administrative Forms for all of their Metastorm processes.
- SharePoint and JSR-168 Portals: Quickly build robust portal pages that are specific to your process or user role with our web parts for SharePoint or portlets for Java.
- Office 2007: Unique Office 2007 client will not only enable users to access work items from within their productivity tools, but it will enable them to bind processes and process data directly to the work items they create.
- Any Language: Rapid deployment in any language, including those requiring right to left display

Design

Key to the success of a BPM implementation is how quickly and easily a new process can be designed and implemented. The

Metastorm Process Designer enables process owners, managers, and IT professionals to create rich, graphical models of their business processes. These models provide much more than basic views of the process, but render insight into other execution relevant components and one-click navigation to them. Moreover, within the same design environment users can rapidly create other “process bound” components such as user interfaces/forms and business rules. Artifacts that are candidates for reuse can be easily stored in, and retrieved from, a common repository and associated process libraries, thereby supporting centers of excellence or less formal forms of enterprise collaboration. The level of richness, unification and ease of use of Metastorm BPM’s design environment enables exceptional speed and flexibility in prototyping and executing improvements to business processes, and explains why many Metastorm clients have self implemented hundreds of processes using the product.



Integrate, Deploy and Automate

Tight **Integration** into external applications and data sources is critical to achieving the highest levels of business process improvement within organizations. But historically such integration has often been complex, costly and largely the domain of the technician. Metastorm BPM takes integration to a new level. It allows users to “drag and auto bind” business friendly integration objects and visual integration models directly to a process model and its relevant components, such as user forms. These capabilities allow nontechnical business users to create external integrations in seconds rather than necessitating handoffs to overloaded IT staff to complete integrations in days, weeks or months. At the same time, Metastorm BPM also strongly supports the technical user where desired or appropriate, especially where highly complex or multi platform application and data integration is required. For the most challenging of environments, such as mainframes and legacy applications, **Metastorm Integration Manager** (MIM) allows organizations to quickly “service enable” and expose these assets to a business process, allowing them to become full process participants within a true service-oriented architecture. MIM also allows you to easily implement system based processes or process components with ease -such as high volume, straight through processing or managed file transfers.

Once a process and its associated integration points have been designed the **Metastorm Process Engine** automatically deploys processes modeled in the Designer and acts as the orchestrator of all human- and system-based actions defined in the process. Metastorm BPM deployments can be executed on their own, subject to whatever governance process is required, and can even be scripted to automatically deploy in conjunction with other related system deployments. Once deployed, the Engine captures all events and process-related data in the Process Repository, providing an essential inventory of information that serves as the foundation for compliance audits, reporting and analysis and process optimization.

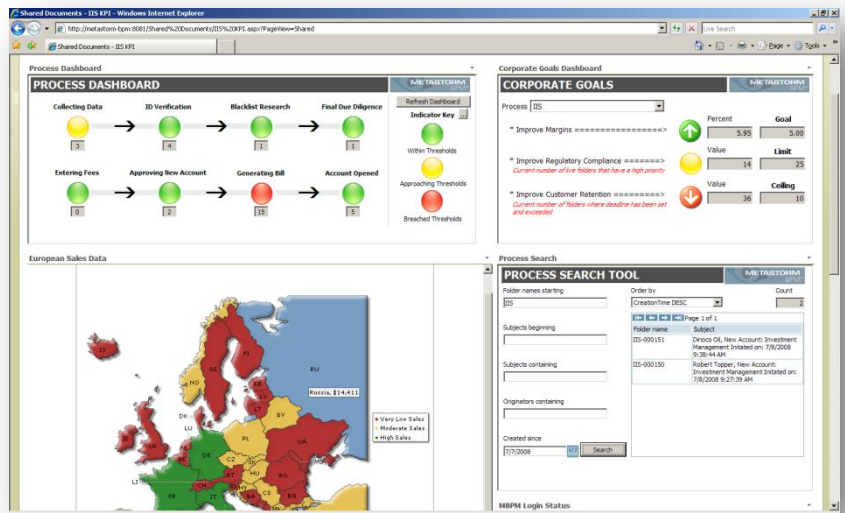
Empower and Manage

Achieving the most effective levels of process participation requires interaction with users in the most appropriate and effective manner. Metastorm's BPM supports integration into a very broad array of user interfaces including web, SharePoint and JSR-168 portals, Microsoft Office, Blackberry and an infinite array of custom designed interfaces. Deep integration into Microsoft Office allows users to seamlessly manage their work as it relates to these common desktop applications.

Within whatever user interface technology is used, features such as Metastorm BPM's To Do, Watch and alerting keep users focused on the most important issues at hand. Moreover, through Metastorm's highly dynamic user forms, participants can interact and submit information based on their specific user profile and current process context. Such user interface dynamism also provides exceptional support for important and growing needs around governance, risk management and compliance.

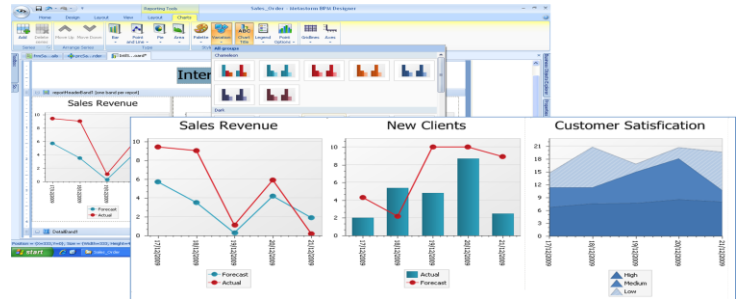
With every passing day our World becomes more global. Organizations have a need to communicate and interact with their employees, clients and other business partners in multiple languages. Metastorm BPM gives organizations unprecedented ability to implement and manage business processes in multiple languages. Processes can be implemented in any language, including those that require right to left display. In addition, Metastorm BPM's unique architecture allows you to implement multiple languages based on a common process instance, set of forms, rules, and so forth. This makes implementing and maintaining multi-lingual processes faster and easier, and makes multi-lingual user interaction seamless and more productive.

Whether it is a business user, customer, supplier, or IT administrator, Metastorm BPM empowers each process participant to manage critical items in the most appropriate way based on their role. This results in improved process productivity, insight, governance, risk management and compliance.



Monitor and Report

Strong process intelligence is needed in order to effectively manage processes as well as identify risks and opportunities within your organization. Metastorm BPM gives you the ultimate in speed to value and flexibility in gaining process intelligence. Included in Metastorm BPM is a native, tightly integrated process intelligence capability which enables process owners, participants, executives, and management to monitor and report on processes and act on process events. Customizable dashboards and reports can be tailored to display key performance indicators relevant to a specific person, department, or line of business. Powerful ad-hoc capabilities are also available, enabling users at any level to create customized dashboards and reports and provide the ability for time-phased trend analysis and predictive forecasting. Data can also be easily embedded into text, Metastorm reports, enabling process designers to create high quality documents for printing or delivery via e-mail for uses such as customer letters, invoice, contract generation and so forth.



Metastorm also realizes that many organizations already have a preferred BI/reporting technology or standard. Metastorm BPM makes it extremely easy to use the BI/reporting tool of your choice. Metastorm BPM automatically collects and stores all relevant data on a process. The product's open architecture and documented schema allows for easy integration of any contemporary BI or reporting technology.

Analyze and Refine

Metastorm Advance Simulation drives process optimization and reduces risk by enabling organizations to test “what if” scenarios before making production process changes. Process owners can change the process model to reflect proposed or expected changes. They can then simulate how the new version of the process will perform, using historical process data from the Process Repository and/or business assumptions. Multiple changes can be simulated and compared, enabling process owners to identify changes that bring the most value and easing the change management burden on all parties.

For more information, visit <http://www.metastorm.com>.

© Copyright 2009, Metastorm Inc. All rights reserved. Enterprise Process Advantage, Metastorm BPM, Metastorm Discovery, Metastorm DNA, Metastorm Enterprise, Process Pod and ProVision are either registered trademarks or trademarks of Metastorm Inc. Other product, service and company names mentioned herein are for identification purposes only and may be trademarks of their respective owners. 12.17.2009.